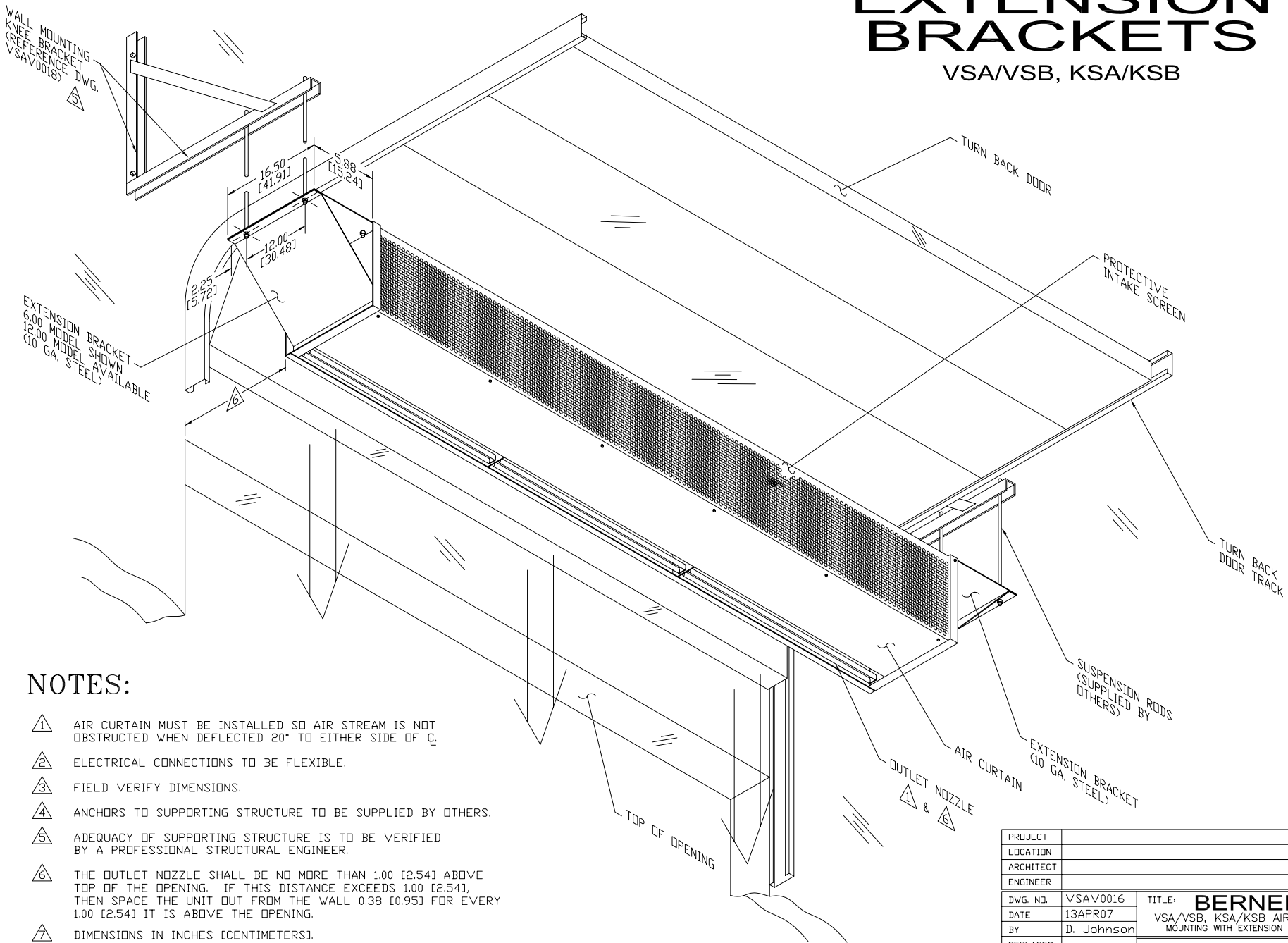


EXTENSION BRACKETS

VSA/VSB, KSA/KSB



NOTES:

- 1 AIR CURTAIN MUST BE INSTALLED SO AIR STREAM IS NOT OBSTRUCTED WHEN DEFLECTED 20° TO EITHER SIDE OF C.
- 2 ELECTRICAL CONNECTIONS TO BE FLEXIBLE.
- 3 FIELD VERIFY DIMENSIONS.
- 4 ANCHORS TO SUPPORTING STRUCTURE TO BE SUPPLIED BY OTHERS.
- 5 ADEQUACY OF SUPPORTING STRUCTURE IS TO BE VERIFIED BY A PROFESSIONAL STRUCTURAL ENGINEER.
- 6 THE OUTLET NOZZLE SHALL BE NO MORE THAN 1.00 [2.54] ABOVE TOP OF THE OPENING. IF THIS DISTANCE EXCEEDS 1.00 [2.54], THEN SPACE THE UNIT OUT FROM THE WALL 0.38 [0.95] FOR EVERY 1.00 [2.54] IT IS ABOVE THE OPENING.
- 7 DIMENSIONS IN INCHES [CENTIMETERS].

PROJECT		TITLE:	BERNER
LOCATION		VSA/VSB, KSA/KSB AIR CURTAIN	
ARCHITECT		MOUNTING WITH EXTENSION BRACKETS	
ENGINEER			
DWG. NO.	VSAV0016		
DATE	13APR07		
BY	D. Johnson		
REPLACES			
BY		BERNER INTERNATIONAL CORP. NEW CASTLE, PA.	